

## Performance Area

Width: 14.3m  
Proscenium Width: 10.5m  
Maximum Depth to Back Wall: 10.75m  
Depth to Uppermost Flying Bar 8.2m  
Max Fly Height: 9.25m  
(Further measurements available on request)

Auditorium is of a bleacher unit type allowing a total free floor space of 258sqm.

## Surface

Hardboard covered ply on sprung battens. Small fixings allowed into stage ONLY

## Access

Access to scene dock and stage is Rear fire doors or roller door at ground level rear of stage. Limited set storage available.

**PLEASE NOTE: ARC has no dedicated parking for staff or visiting company vehicles.**

## Rigging

No fly tower – stage to ceiling grid height 9.2m  
Fly floor: P/S  
13 x 4 line hemp sets max load 100kg  
5 x 4 line motor winch set max load 250kg  
4 x Tank Traps 2m. No other stands available. Cables, Greco's etc available.

**Gel to be supplied by visiting company**

## Masking & Cloths

### No Front tabs (open stage)

6 x black borders 11m W, depths 1.5m > 3m  
3 x pairs black legs 1.5m W x 8m  
4 x 5m x 1.5m hard black wool serge flats (at front stage edge)

Side masking tracks hung on stage edge of technical galleries c/w black wool serge legs.

1 x white Filled cloth Cyc (11m W, 8m drop)  
1 x black sharks tooth gauze (11m W, 9m drop)  
1 x star cloth (9m W, 7m drop) (NB there is an additional cost for use of the star cloth)

## Power Supply

125A single phase supply (Production Lighting)  
63A single phase supply (Production Sound)  
110A transformer hardwired in Scene Dock  
16A individually switched sockets (6 per bar)

## Lighting

184 circuits through LD90 dimmers (176 x 10A 2.5kw / 8 x 25A 5kw) controlled via DMX by an ETC GIO lighting console universe 1

15 amp dimmer plug locations are listed below:

Down stage Right (ground)	8
Mid stage Right (ground)	6
Up stage Right (ground)	4
Down stage Left (ground)	8
Mid stage Left (ground)	6
Up Stage Left (ground)	4
Front of house Bridge	24
Circle bar Front	6
Circle bar Left	4
Circle bar Right	4
Gallery bar	6
LX bars 1,2 and 3	18
Lx bar 4	12
Spare Circle bar ways	8
Spare ways on fly floor SR	12

8 non dim circuits located:

2 SR; 2 SL; 2 fly floor; 1 FOH bridge; 1 scene dock

DMX ports located on all bars and sides of stage (more info on request)  
 Multiple DMX splitter available Non generics ran via ART NET Elation 8 DMX node )

Static rig consisting of :

- o 16 Robe Robin 150
- o 4 Robe DL4X
- o 2 Robe DL4s
- o 6 Prolights Eclipse TW Fresnel
- o 6 ETC Colour source FC with 25-50 zoom
- o 20 ETC Colour source par DB with Barn doors
- o 6 ETC Colour source par SB with Barn doors
- o 3 Chauvet Ovation Batten

Static rig powered from individually fed 16A Sockets (6 per bar )

Generic stock available on request

18 x ETC SOURCE4 Fresnel 750w with barn Doors  
 8 x ETC Source 4 25/50 ZOOM Degree Profile  
 6 x ETC Source 4 19 or 36 Degree Profile (interchangeable)  
 12 ETC Source 4 Junior with Iris and Gobo holder  
 16 Black Long nose PAR 64 (with 62 lamp standard others available on request )

## Communications

Stage managers desk – Positioned either P.S, O.P, rear of stalls and

5 x Tech-pro dual circuit intercom Locations in control box rear stalls and stage

Monochrome camera with blackout viewing facility

1 L'Maitre MVS Hazer  
1 Unique Hazer MK2  
1 50cm mirror balls and rotators

Other effects available on request

(Please note use of effects equipment may incur additional costs and are shared with other venues)

## Effects

## Sound

Soundcraft 24 Channel Mixing desk/ Yamaha LS9 32

2x EV ELX 215 stage level  
2 xEV ELX 112 First floor  
2x EV ELX 112 Second floor

All powered via individual Crown XLS 1502 DriveCore2 Amps

2 x 300w monitors SL/R

1 x Tascam MD/CD1 MK2 CD and MD recorder player  
1 x Tascam CD-01U Pro Cd Player 1u Slot Loading  
1 x Tascam MD350 MD recorder player  
1x MacBook with unlicensed QLAB available on request as shared with other venues

**Please note: Although generally reliable ARC does not guarantee trouble free playback of CD/R or CD/RW discs on our CD players. We would generally advise that critical show music is copied to mini disk prior to arrival**

Microphones/DI boxes are available upon request .

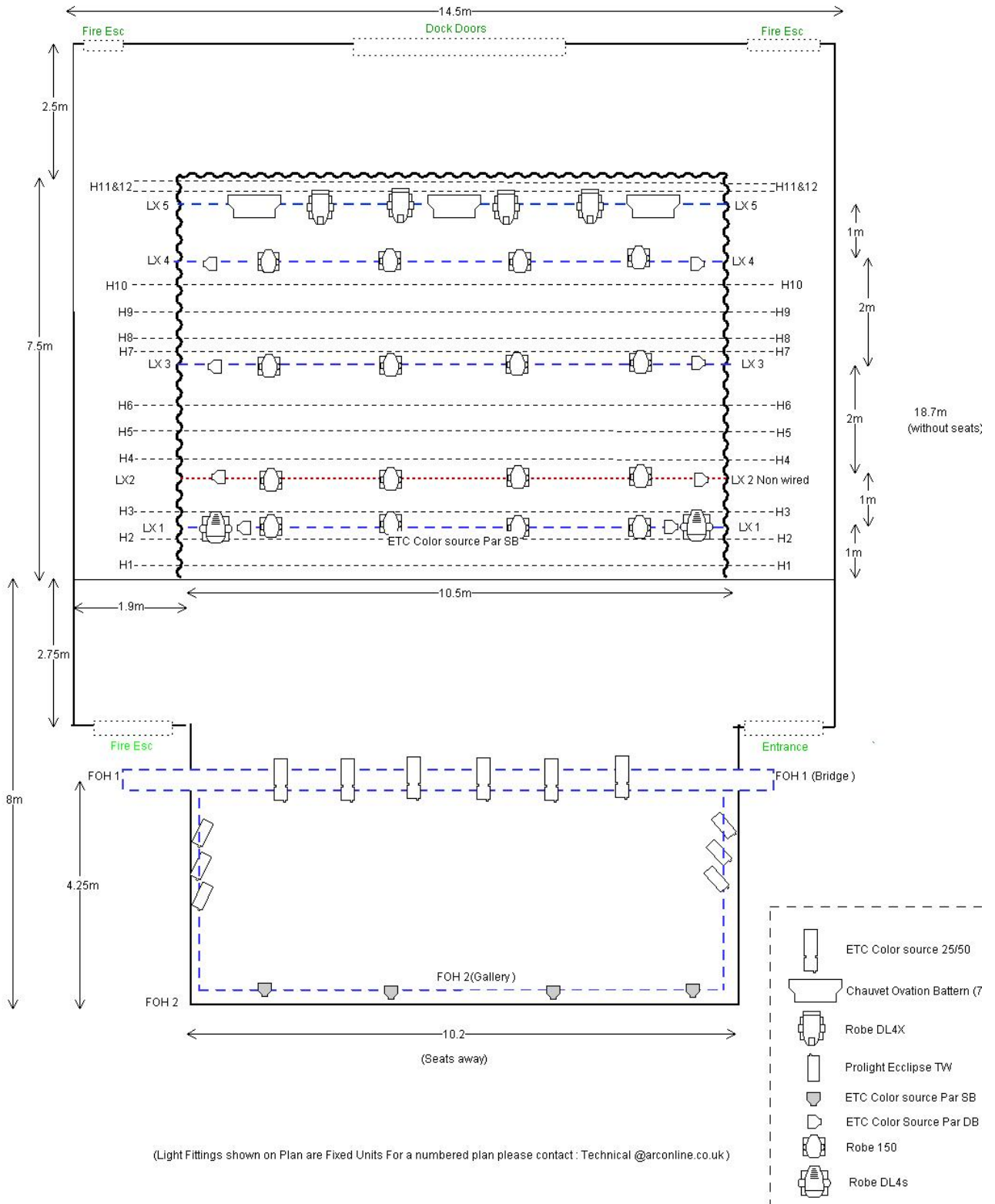
ARC does not stock Radio microphones and any required will be sourced from outside Company's at the users cost.



For any Further questions or queries please contact the ARC Technical Department

**Peter Burgon**  
Technical Manager

**T:** 01642 525 190      **E:** [Peter.burgon@arconline.co.uk](mailto:Peter.burgon@arconline.co.uk)



# Theatre



Supported by  
**ARTS COUNCIL  
ENGLAND**